

Большие паровые стерилизаторы SELECTOMAT

Технические характеристики

По вопросам продаж и поддержки обращайтесь:

Алматы (727)345-47-04
Ангарск (3955)60-70-56
Архангельск (8182)63-90-72
Астрахань (8512)99-46-04
Барнаул (3852)73-04-60
Белгород (4722)40-23-64
Благовещенск (4162)22-76-07
Брянск (4832)59-03-52
Владивосток (423)249-28-31
Владикавказ (8672)28-90-48
Владимир (4922)49-43-18
Волгоград (844)278-03-48
Вологда (8172)26-41-59
Воронеж (473)204-51-73
Екатеринбург (343)384-55-89

Иваново (4932)77-34-06
Ижевск (3412)26-03-58
Иркутск (395)279-98-46
Казань (843)206-01-48
Калининград (4012)72-03-81
Калуга (4842)92-23-67
Кемерово (3842)65-04-62
Киров (8332)68-02-04
Коломна (4966)23-41-49
Кострома (4942)77-07-48
Краснодар (861)203-40-90
Красноярск (391)204-63-61
Курск (4712)77-13-04
Курган (3522)50-90-47
Липецк (4742)52-20-81

Магнитогорск (3519)55-03-13
Москва (495)268-04-70
Мурманск (8152)59-64-93
Набережные Челны (8552)20-53-41
Нижний Новгород (831)429-08-12
Новокузнецк (3843)20-46-81
Ноябрьск (3496)41-32-12
Новосибирск (383)227-86-73
Омск (3812)21-46-40
Орел (4862)44-53-42
Оренбург (3532)37-68-04
Пенза (8412)22-31-16
Петрозаводск (8142)55-98-37
Псков (8112)59-10-37
Пермь (342)205-81-47

Ростов-на-Дону (863)308-18-15
Рязань (4912)46-61-64
Самара (846)206-03-16
Санкт-Петербург (812)309-46-40
Саратов (845)249-38-78
Севастополь (8692)22-31-93
Саранск (8342)22-96-24
Симферополь (3652)67-13-56
Смоленск (4812)29-41-54
Сочи (862)225-72-31
Ставрополь (8652)20-65-13
Сургут (3462)77-98-35
Сыктывкар (8212)25-95-17
Тамбов (4752)50-40-97
Тверь (4822)63-31-35

Тольятти (8482)63-91-07
Томск (3822)98-41-53
Тула (4872)33-79-87
Тюмень (3452)66-21-18
Ульяновск (8422)24-23-59
Улан-Удэ (3012)59-97-51
Уфа (347)229-48-12
Хабаровск (4212)92-98-04
Чебоксары (8352)28-53-07
Челябинск (351)202-03-61
Череповец (8202)49-02-64
Чита (3022)38-34-83
Якутск (4112)23-90-97
Ярославль (4852)69-52-93

Россия +7(495)268-04-70

Казахстан +7(727)345-47-04

Беларусь +(375)257-127-884

Узбекистан +998(71)205-18-59

Киргизия +996(312)96-26-47

эл.почта: bmq@nt-rt.ru || сайт: <https://bmt.nt-rt.ru/>

Selectomat PL

Always two steps ahead.



Safety and reliability.

With the Selectomat PL, MMM has developed a state-of-the-art steam sterilizer which meets every demand of our customers and anticipates future requirements.

Safety is one of the most decisive factors in sterile processing. Successful sterilization is documented by batch protocols and print-outs generated through user-friendly software. The Selectomat PL steam sterilizers can deal with even the most complex sterilization tasks.

Thanks to quality German engineering, the Selectomat PL is a steam sterilizer designed to comply with German and European regulations on medical devices. Comprehensive quality management and thorough final testing in our manufacturing plants ensure that our customers get more than a "made in Germany" stamp.

The Selectomat PL meets all relevant CE directives (such as MDD 93/42/EEC and PED 97/23/EEC) and all important standards such as EN 285, DIN EN 60601 and DIN EN 61010 and bears the CE mark. The compliance with these guidelines is regularly audited. MMM is a certified company according to EN ISO 13485:2003 and EN ISO 9001:2000.

Model variety.

Selectomat PL is available in all standard chamber sizes with horizontal or vertical doors or as pit mounted installation (see supplementary sheet for technical details).

Cost effectiveness.

Modern hospitals need steam sterilizers that are cost-effective both with regard to initial investment and operating consumption. They must meet the required standards and offer high functionality with easy to understand operating tools.



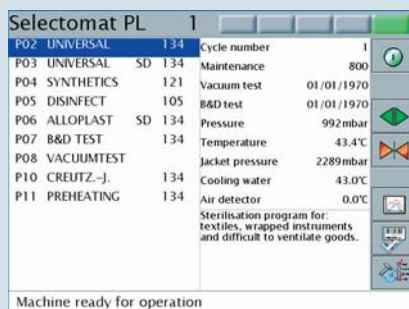
Thanks to the long lifetime and low consumption costs of our sterilizers, MMM quality products offer a sound return of investment. The outstandly low water and energy consumption makes the Selectomat PL unique in the market.

Backed by 50 years of experience, MMM is one of the global leaders in sterile processing. This is the promise we make to our customers: products of an extraordinary long service life and an exceedingly reliable performance, customer service of a short response time and spare parts availability for decades.

High functionality.

Clear touch screen.

Large buttons on a 10.4 inches touch screen and a well-structured program menu make the operation of the Selectomat PL very simple to use.



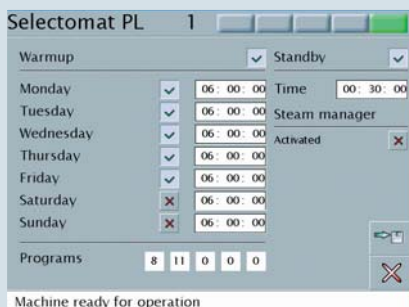
- Operator interface for program selection

Program control.

The self-explanatory operator software is easy to understand and allows the user to set many functions and cycles. An intuitive operator guidance makes sure that the Selectomat PL will soon be your best friend in sterilization.

Autostart and standby function.

The unrivalled autostart function of the Selectomat PL allows an automatic start-up in the morning. It runs a warm-up program including a first cycle run without load. The Selectomat PL is ready whenever you are. Upon completion of the last cycle of the day, the standby function automatically activates a sleep-mode.



Independent steam generation.

For an independent clean steam supply the Selectomat PL can be equipped with a Unotherm electric steam generator installed externally or integrated in the sterilizer or with a Duotherm steam-to-steam generator.

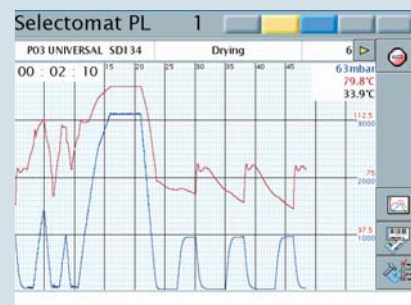


TeleClock: display of remaining cycle time.

A large display of the remaining cycle time is integrated in the screen. It shows the remaining operating time of the running cycle thus allowing for an optimal workflow in your CSSD.



- Remaining cycle time (cycle stage „Drying“)



- Process graph of running cycle



Reliable equipment.

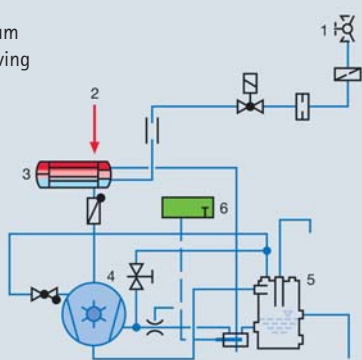
Vacuum pump.

The powerful and low-noise two-stage vacuum pump provides fast air-removal from the chamber, thus reducing the cycle times. A special water saving system helps reducing the water consumption. The vacuum pump normally runs in a cost-effective circulation operation and fresh water is tapped only if necessary.



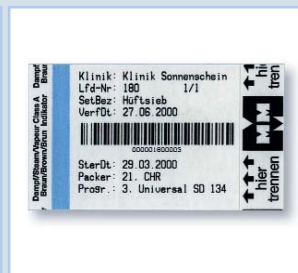
Diagram of the vacuum device with water saving system.

- 1) fresh water
- 2) from chamber
- 3) heat exchanger
- 4) pump
- 5) circulation tank
- 6) thermostat



Documentation systems.

The process run and observance of the defined parameters can be monitored and documented by either internal or external documentation systems. Suitable interfaces allow the printing of batch protocols on various systems.





A powerful performance.

- Well-structured touch screen
- User-friendly operator guidance
- TeleClock: display of remaining cycle time
- Autostart and stand-by function
- Powerful low-noise vacuum pump
- Short cycle times
- Fully automatic or manual loading and unloading
- High cost-effectiveness thanks to low water and energy consumption
- Cycle data storage on internal storage medium
- Interface for external documentation systems
- German engineering and brand quality

Selectomat SL

Leading quality – excellent pricing



MMM is a leading supplier of hospital sterile processing equipment worldwide. For good reasons: Our machines stand out not only for their excellent quality and longevity. For more than five decades, MMM has proved to be a reliable partner to their clients – no matter where you are or when you need our help. That is why we exactly know what you need for your daily sterilization tasks.

Based on our longstanding experience, we have developed an innovative standard line of steam sterilizers, Selectomat SL, which meets the regular requirements of a hospital. The Selectomat SL sterilizer will convince you both with its well-known high MMM quality and low costs in investment, operation and service.

Quality with a certificate

Reliable, gentle and economic: that is how steam sterilizers of Selectomat SL series process all kinds of hospital goods: solid and porous goods, heat sensitive plastics and textiles as well as liquids in open or loosely closed bottles. It goes without saying that the Selectomat SL meets all European standards and forward-looking quality requirements such as EN 285, EN 554, EN ISO 11134 etc.

Easy recording

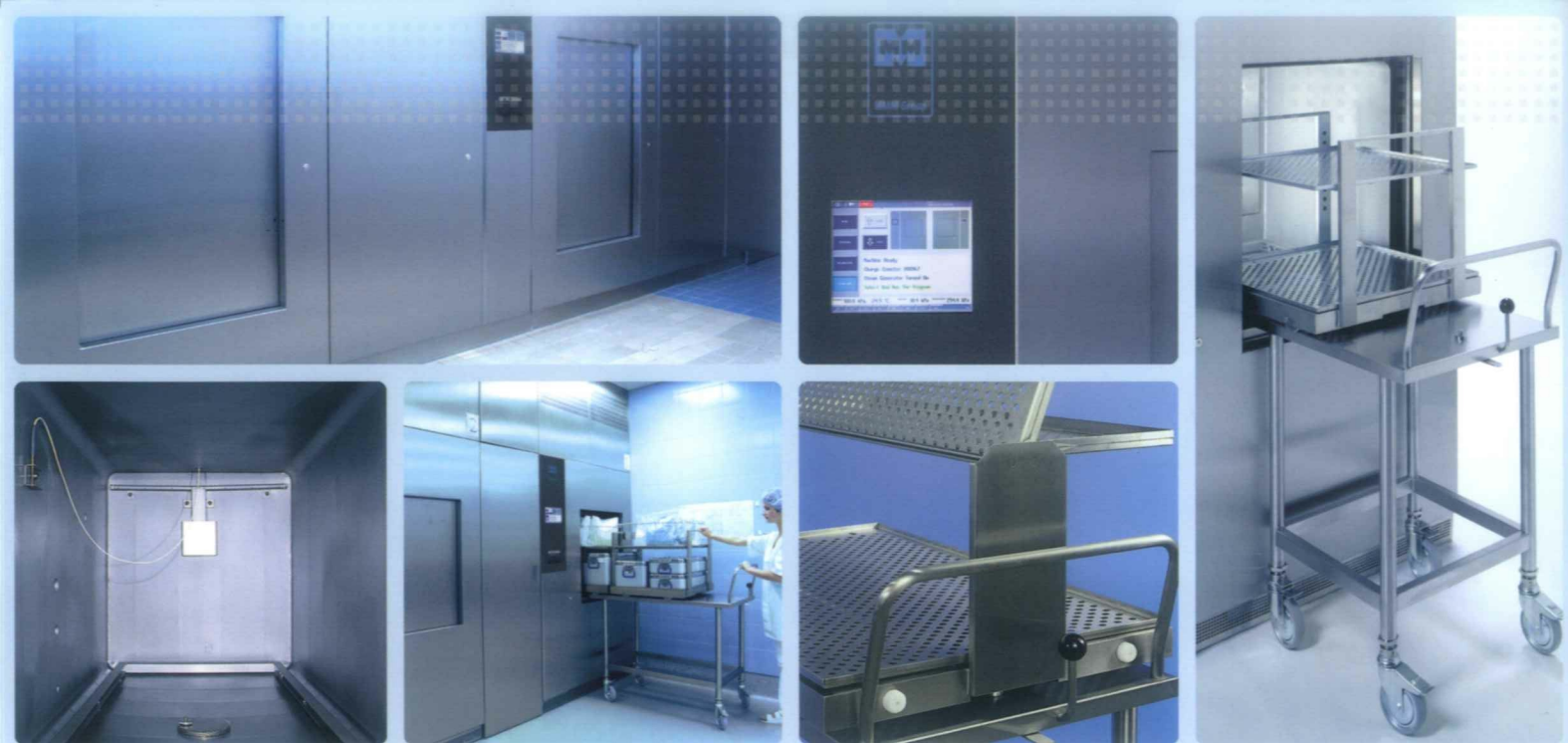
Steam sterilizers of the Selectomat SL series are available in a great variety of chamber sizes ranging from 160 to 1.280 litres and with a multitude of useful features. All important parameters of the sterilization process are measured redundantly and separately from the machine control system and recorded accordingly. The integrated batch printer then produces the detailed batch protocol, which serves both for the control of the sterilization safety and as proof in terms of European quality standards.

Resource management

Optimized program cycles and the use of components with low consumption guarantee a high operating efficiency. By means of the integrated water saving system and the specific pre-heating device of the chamber, we have managed to realize an innovative resource management in the Selectomat SL. It allows you to reduce the consumption of power and water by up to 80 % compared to similar machines.

Service – time is money

If necessary, our service teams all over the world are available within no time. In addition, the integrated self diagnostics and service program help to reduce considerably the maintenance and service costs. The result: downtimes for service reasons and subsequent service costs are cut to a minimum.



Designed for reliability

Selectomat SL has been designed to meet the highest demand in terms of economy, functionality and user-friendliness. The sterilization chamber is made of high quality stainless steel (AISI 316 Ti and AISI 316 L) and is a warranty for the sterilizer's longevity and robustness in a hard day-to-day business. It's efficient insulation helps to reduce the loss of heat to a minimum and to save operating costs at the same time.

Independent steam supply

The integrated electric steam generator of Selectomat SL sterilizer makes steam sterilization independent from the steam supply on site. It's high performance and the thermal degasification device make for excellent steam quality and short cycle times. The result: fast sterile throughput and ideal operating cost efficiency.

Clear menu guidance

The ergonomically integrated 8.2" touch screen makes operation extremely easy. The program menus are clearly laid out and mostly self-explanatory. All relevant parameters such as temperature, pressure and remaining cycle time are displayed during the on-going cycle run.

Extensive program variety



Apart from standard programs for the sterilization of solid and porous goods at 134°C or 121°C, Selectomat SL offers special programs for the treatment of prions and for disinfection at 105°C. A further 7 programs can be adjusted individually to your specific requirements.

Great loading options

Special trays, containers, insert racks and loading trolleys tailored to fit the various models of Selectomat SL allow optimized utilization of the chamber volume and facilitate chamber loading and unloading with different goods.



MMM Group

Dimensions

Type	Capacity			Inner chamber dimensions H x W x D in mm	Chamber volume volume (liter)	Outer machine dimensions H x W x D in mm
	1 door	2 doors	(STU ¹⁾)			
636 V	●	●	2	670 x 350 x 700	160	1918 x 1000 x 970 **
666 V	●	●	4	700 x 650 x 690	314	1918 x 1300 x 970 **
669 V	●	●	6	700 x 650 x 990	450	1918 x 1300 x 1270 **
6612 V	●	●	8	700 x 650 x 1340	610	1918 x 1300 x 1620 **
6618 V		●	12	700 x 650 x 1940	885	1918 x 1300 x 2240
9612 H	●	●	12	1000 x 650 x 1340	900	1918 x 1900 x 1620 **
9618 H	●	●	18	1000 x 650 x 1940	1275	1918 x 1900 x 2220 **

* including 100 mm supporting legs

** plus 20 mm in case of two doors

Consumption

Type	Cold water ²⁾ m ³ / cycle	Electric energy ³⁾ kWh / cycle	Compressed air Nm ³ /h	Power input (kW) / fuse protection (A)	Demin. water ⁴⁾ m ³ / cycle
636 V	0.06	5.0	0.2	24,5/63	0,006
666 V	0.07	6.0	0.2	38/63	0,008
669 V	0.08	7.5	0.2	47/80	0,009
6612 V	0.09	9.0	0.2	48/80	0,011
6618 V	0.20	15.0	0.2	66/100	0,015
9612 H	0.20	16.0	0.2	66/100	0,013
9618 H	0.30	23.0	0.2	75/125	0,025

H: Horizontal sliding door with electric door drive, V: Vertical sliding door with electric door drive

¹⁾ 1 STU: 300 x 300 x 600 mm, ²⁾ Cold water: temperature: max. 15 °C pressure: 3 - 5 bar

³⁾ Electricity: 3P/PE/AC 400, ⁴⁾ Demineralized water: Conductivity: max 15microS/cm

Selectomat SL – technical description

Standard equipment

- Integrated electric steam generator with automatic scouring device
- Water saving vacuum pump
- Special chamber jacket for improved chamber preheating and reduction of demineralized water consumption
- Ceramic bead blasted inner chamber walls
- Chip card reader
- Touch screen 8.2"
- Display of remaining cycle time
- Sterilization chamber, doors and heated chamber jacket are made of high quality CrNiMo steel (AISI 316 TI / AISI 316 L)
- Low-noise thermo-printer for batch documentation
- RS 232 interface

Options:

- Condensate cooling device
- Stainless steel valves
- Additional pressure gauge on loading and unloading side
- Warm-up function
- Tropical execution
- Special voltage
- Chamber inserts
- Chamber inserts for trolley docking
- Chip card
- Accessories such as trays, baskets etc.
- Transport and loading trolleys

Sterilization programs

Standard:

Preheating 134° C

Short-time preheating program

Universal 134° C

Wrapped devices, sterilization time: 7 min

Universal Container 134° C

Wrapped devices with super drying, sterilization time: 7 min

Rubber 121° C

Wrapped devices made of glass, rubber or plastics, sterilization time: 20 min

Tools fast

Unwrapped devices, sterilization time: 4 min

Optional:

Prions 134°C

Sterilization time: 60 min

Disinfection 105°C

Disinfecting time: 20 min

Solutions 121°C

Liquids in open bottles, sterilization time: 20 min

Test programs

BD test 134° C

Steam penetration test, holding time: 3.5 min

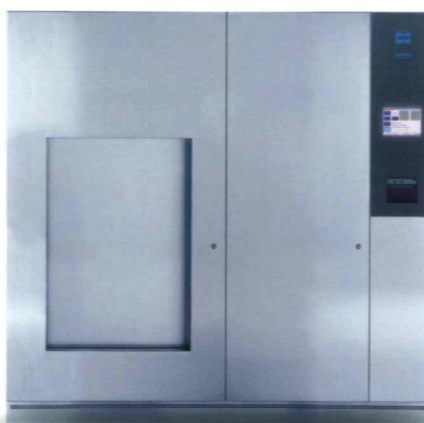
Vacuum test

Air leakage test, checking the tightness of the entire system

Service

Service program for easy control and maintenance

Further programs can be set to customer requirements. Customized programs can be stored on chip cards and entered by means of the chip card reader integrated in the operating panel. For the sterilization of medical devices, the selected process must be validated.



Алматы (727)345-47-04
Ангарск (3955)60-70-56
Архангельск (8182)63-90-72
Астрахань (8512)99-46-04
Барнаул (3852)73-04-60
Белгород (4722)40-23-64
Благовещенск (4162)22-76-07
Брянск (4832)59-03-52
Владивосток (423)249-28-31
Владикавказ (8672)28-90-48
Владимир (4922)49-43-18
Волгоград (844)278-03-48
Вологда (8172)26-41-59
Воронеж (473)204-51-73
Екатеринбург (343)384-55-89

Иваново (4932)77-34-06
Ижевск (3412)26-03-58
Иркутск (395)279-98-46
Казань (843)206-01-48
Калининград (4012)72-03-81
Калуга (4842)92-23-67
Кемерово (3842)65-04-62
Киров (8332)68-02-04
Коломна (4966)23-41-49
Кострома (4942)77-07-48
Краснодар (861)203-40-90
Красноярск (391)204-63-61
Курск (4712)77-13-04
Курган (3522)50-90-47
Липецк (4742)52-20-81

Магнитогорск (3519)55-03-13
Москва (495)268-04-70
Мурманск (8152)59-64-93
Набережные Челны (8552)20-53-41
Нижний Новгород (831)429-08-12
Новокузнецк (3843)20-46-81
Ноябрьск (3496)41-32-12
Новосибирск (383)227-86-73
Омск (3812)21-46-40
Орел (4862)44-53-42
Оренбург (3532)37-68-04
Пенза (8412)22-31-16
Петрозаводск (8142)55-98-37
Псков (8112)59-10-37
Пермь (342)205-81-47

Ростов-на-Дону (863)308-18-15
Рязань (4912)46-61-64
Самара (846)206-03-16
Санкт-Петербург (812)309-46-40
Саратов (845)249-38-78
Севастополь (8692)22-31-93
Саранск (8342)22-96-24
Симферополь (3652)67-13-56
Смоленск (4812)29-41-54
Сочи (862)225-72-31
Ставрополь (8652)20-65-13
Сургут (3462)77-98-35
Сыктывкар (8212)25-95-17
Тамбов (4752)50-40-97
Тверь (4822)63-31-35

Тольятти (8482)63-91-07
Томск (3822)98-41-53
Тула (4872)33-79-87
Тюмень (3452)66-21-18
Ульяновск (8422)24-23-59
Улан-Удэ (3012)59-97-51
Уфа (347)229-48-12
Хабаровск (4212)92-98-04
Чебоксары (8352)28-53-07
Челябинск (351)202-03-61
Череповец (8202)49-02-64
Чита (3022)38-34-83
Якутск (4112)23-90-97
Ярославль (4852)69-52-93

Россия +7(495)268-04-70

Казахстан +7(727)345-47-04

Беларусь +(375)257-127-884

Узбекистан +998(71)205-18-59

Киргизия +996(312)96-26-47

По вопросам продаж и поддержки обращайтесь:

эл.почта: bmq@nt-rt.ru || сайт: <https://bmt.nt-rt.ru/>